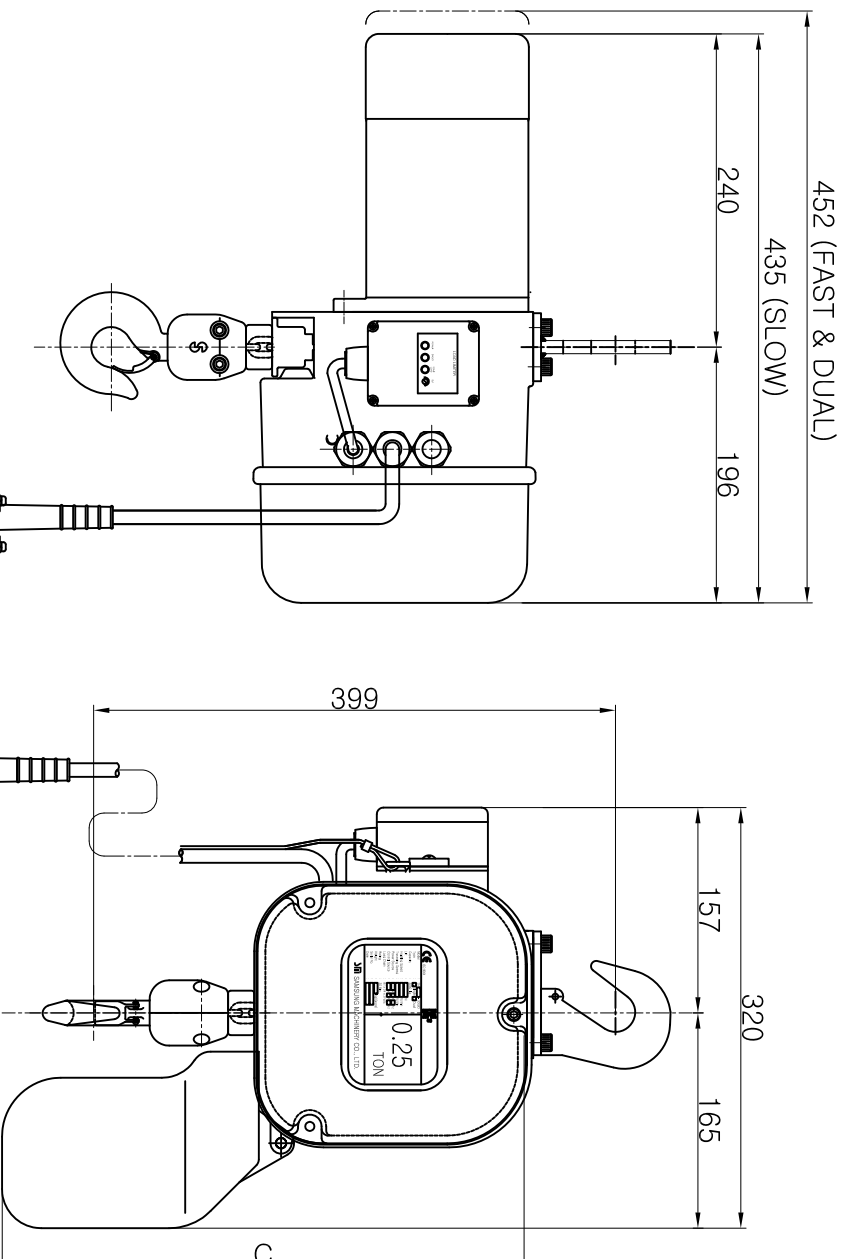


REV	DATE	REASON FOR REVISION	CHECKER BY	APP'D BY
△				

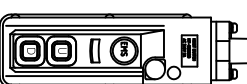
SPECIFICATION

HOISTING LOAD	0.25 TON			
TESTING LOAD	0.32 TON			
LIFTING HEIGHT	Min. 4 ~ 50 M			
HOISTING	FAST	SPEED	8.4 M/MIN	
	MOTOR	0.5 Kw x 4 P		
SLOW	SPEED	5.6 M/MIN		
	MOTOR	0.5 Kw x 4 P		
DUAL	SPEED	8.4 / 4.2 M/MIN		
	MOTOR	0.42 / 0.21 Kw x 4/8 P		
POWER SUPPLY	3Ø, 220~575V, 60HZ			
	1Ø, 110V~230V, 60HZ			
CONTROL VOLTAGE	1Ø, 48V, 110V, 60HZ			
OPERATING METHOD	PUSH BUTTON TYPE			
LOAD CHAIN SPEC.	Ø5.0 x 15P x 1 FALLS			
RATING	30 MIN			
NET WEIGHT	Min. 37~54 KG			



DIMENSIONS

구분	양정 (LIFT)			
	3M~5M	5M~11M	11M~18M	18M~25M
기호				
C	490	560	606	606



SCO-250 / S250H

SAMSUNG HOIST CO., LTD.
주식회사 삼성호이스트

TITLE OF PROJECT 0.25 TON SUSPENSION TYPE
ELEC. CHAIN HOIST GENERAL ASSEMBLY

NO.	DESCRIPTION	MAT'L	SIZE	Q'TY	REMARKS
DESIGNED	CHECKED	SCALE	1/1		SCO-250
DESCRIBED	APPROVED	DATE	2013.05.10		SCO-250H