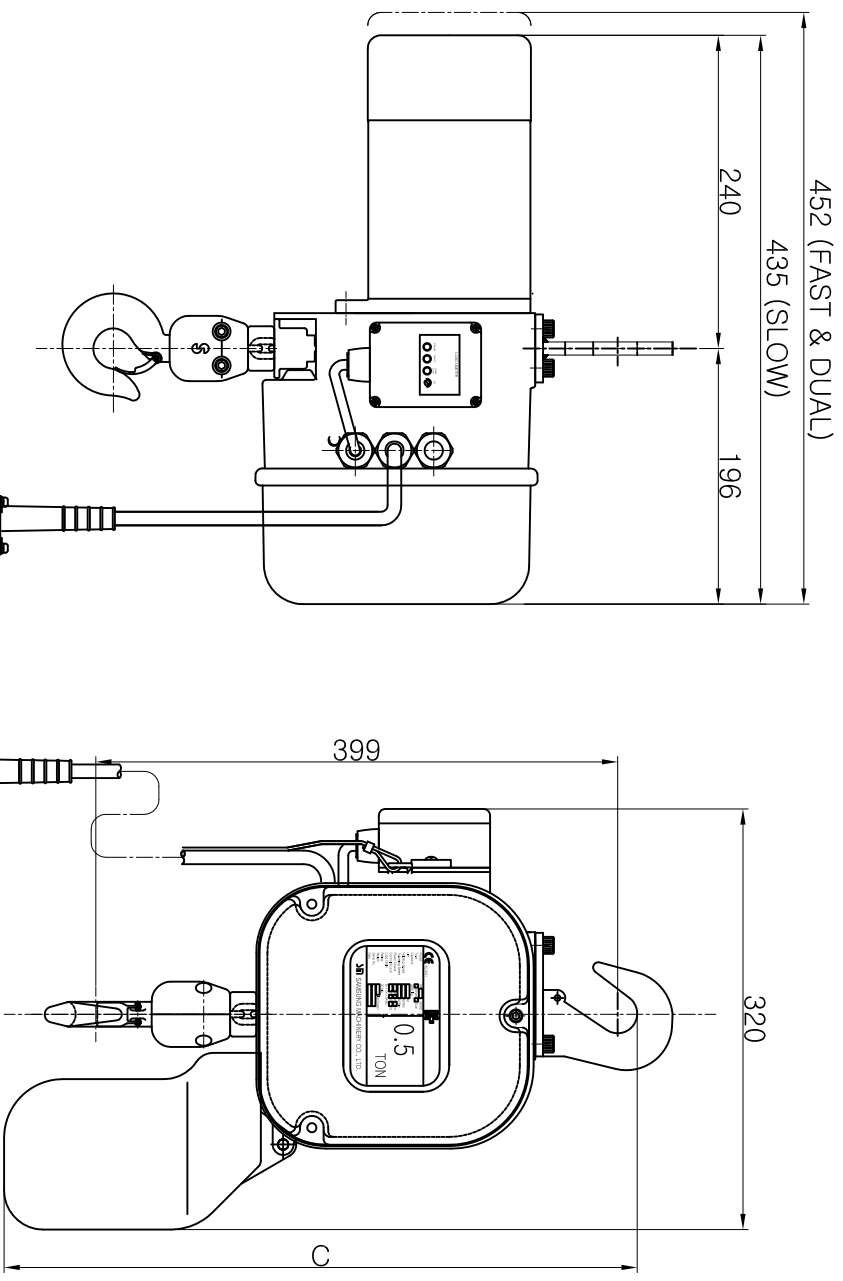


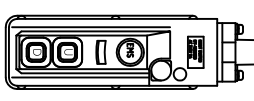
| REV | DATE | REASON FOR REVISION | CHECKER BY | APP'D BY |
|-----|------|---------------------|------------|----------|
| △   |      |                     |            |          |

**SPECIFICATION**

|                  |   |                        |                            |
|------------------|---|------------------------|----------------------------|
| HOISTING LOAD    | 0.5 TON                                   |                        |                            |
| TESTING LOAD     | 0.62 TON                                  |                        |                            |
| LIFTING HEIGHT   | Min. 4 ~ 50 M                             |                        |                            |
| HOISTING         | FAST                                      | SPEED MOTOR            | 8.4 M/MIN<br>1.1 Kw x 4 P  |
|                  | SLOW                                      | SPEED MOTOR            | 5.6 M/MIN<br>0.65 Kw x 4 P |
| DUAL             | SPEED MOTOR                               | 5.6 / 1.8 M/MIN        |                            |
|                  | MOTOR                                     | 0.7 / 0.23 Kw x 4/12 P |                            |
| POWER SUPPLY     | 3Ø, 220~575V, 60HZ<br>1Ø, 110V~230V, 60HZ |                        |                            |
| CONTROL VOLTAGE  | 1Ø, 48V, 110V, 60HZ                       |                        |                            |
| OPERATING METHOD | PUSH BUTTON TYPE                          |                        |                            |
| LOAD CHAIN SPEC. | Ø5.0 x 15P x 1 FALLS                      |                        |                            |
| RATING           | 30 MIN                                    |                        |                            |
| NET WEIGHT       | Min. 37~54 KG                             |                        |                            |



| 구분 |  | 양정 (LIFT) |        |         |         |
|----|--|-----------|--------|---------|---------|
| 기호 |  | 3M~5M     | 5M~11M | 11M~18M | 18M~25M |
| C  |  | 490       | 560    | 606     | 606     |



SCO-500 / 500H



TITLE OF PROJECT 0.5 TON SUSPENSION TYPE  
ELEC. CHAIN HOIST GENERAL ASSEMBLY

| NO.       | DESCRIPTION | MAT'L | SIZE       | Q'TY     | REMARKS |
|-----------|-------------|-------|------------|----------|---------|
| DESIGNED  | CHECKED     | SCALE | 1/1        | SCO-500  |         |
| DESCRIBED | APPROVED    | DATE  | 2013.05.10 | SCO-500H |         |