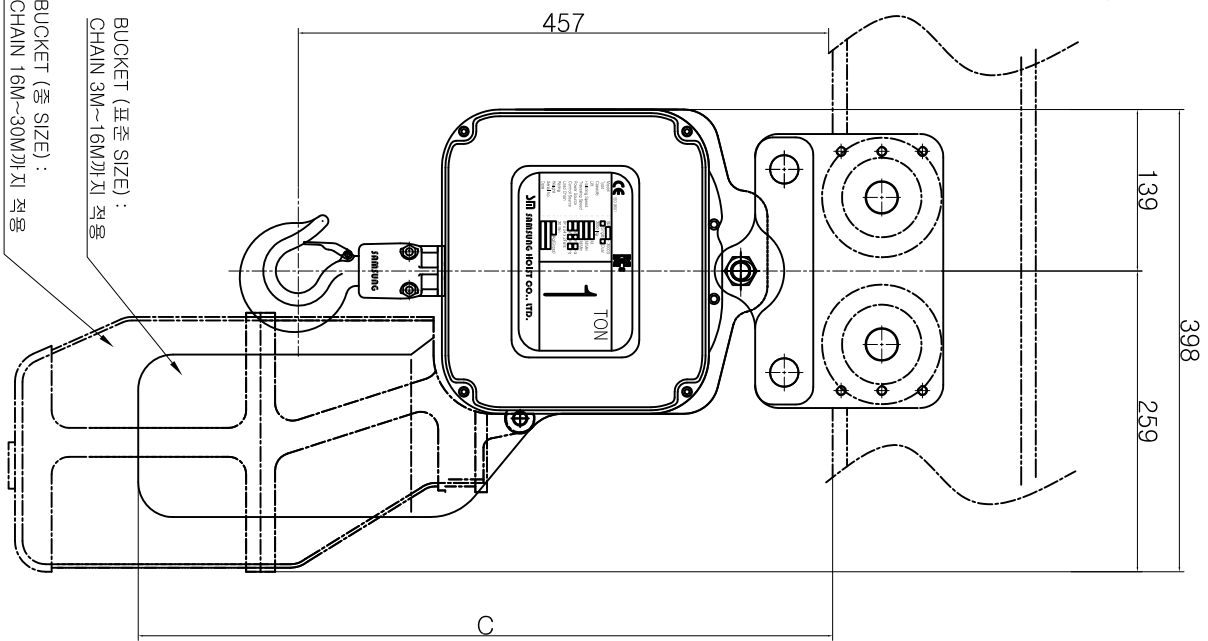
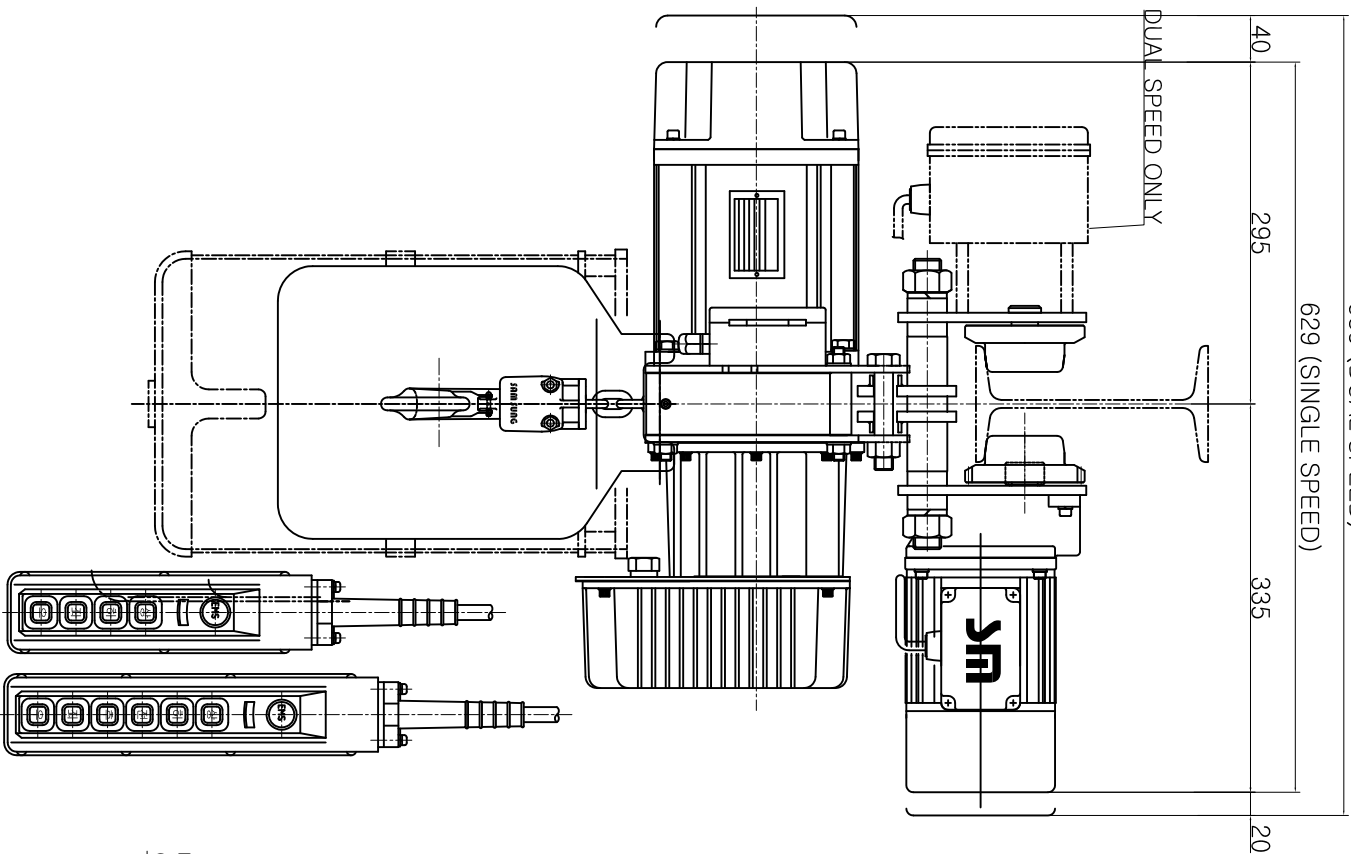


689 (DUAL SPEED)

629 (SINGLE SPEED)



SPECIFICATION

HOISTING LOAD	1 TON		
TESTING LOAD	1.25 TON		
LIFTING HEIGHT	Min. 30 M ~ Max 90 M		
HOISTING	SINGLE	SPEED	7.0 M/MIN
	MOTOR	1.5 Kw x 4 P	
DUAL	SPEED	7.0/3.5 M/MIN	
	MOTOR	1.5/0.75 Kw x 4/8 P	
FAST	SPEED	20.0 M/MIN	
	MOTOR	0.4 Kw x 4 P	
MIDDLE	SPEED	13.3 M/MIN	
	MOTOR	0.27 Kw x 6 P	
SLOW	SPEED	10.0 M/MIN	
	MOTOR	0.2 Kw x 8 P	
DUAL	SPEED	20.0 / 10.0 M/MIN	
	MOTOR	0.4/0.2 Kw x 4/8 P	
POWER SUPPLY	3Ø, 220~575V, 60Hz		
CONTROL VOLTAGE	1Ø, 110~230V, 60Hz		
OPERATING METHOD	1Ø -48V / 110V -60Hz		
LOAD CHAIN SPEC.	PUSH BUTTON TYPE		
WIDTH OF BEAM	Ø7.1 x 21P x 1 FALL		
RADIUS OF BEAM	100 ~ 150 mm		
RATING	MIN. 1500 mm		
NET WEIGHT	30 MIN.		
	APPROX Min.84.4KG~Max.193KG		

DIMENSIONS

구분	양정 (LIFT)		
	3M~16M	16M~30M	30M~50M
기호	C	600	690
		890	



TITLE OF PROJECT
1 TON MOTOR TROLLEY TYPE
ELEC. CHAIN HOIST GENERAL ASSEMBLY

NO.	DESCRIPTION	MATL.	SIZE	QTY	REMARKS
DRAWING NO.	CHECKED	SCALE	DATE	DATE	DATE
DESIGNED	APPROVED	REV. NO.	DATE	DATE	DATE
	정영환	1/1	2013.05.10		

SCT-1000

SCT-1000

REV	DATE	REASON FOR REVISION	CHECKER BY	APPROD BY
△				