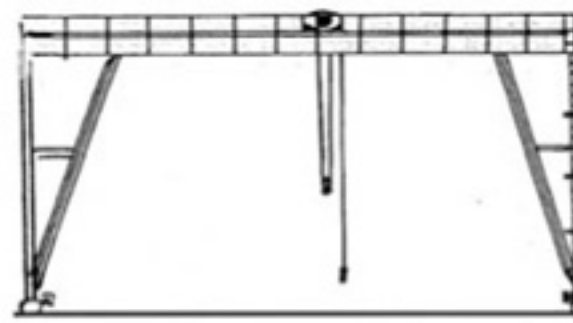
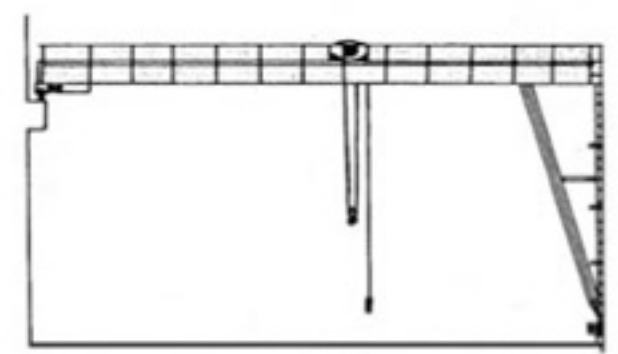


설치도 1



설치도 2



설치도 3

Specification(Double Girder With Double Rail Hoist) >>

MODEL	CAPA-CITY(ton)	MAX SPAN(m)	LIFT (m)	SPEED/MOTOR(m/min)/(kw)			APPROX.DIMENSIONS(mm)			TRAVELING WHEEL(mmØ)	RUN WAY RAIL
				HOISTING	TRAVERSING	TRAVELING	H	A	B		
GOC	1	7.5	6	6/1.1 or 12/2.2	16/0.2 or 24/0.4	22/0.75/ 1/11.8 or 16/0.75/ 1/16	815	3500 ~ 5000	4000 ~ 5500	200	15 22
		9									
		12									
		15									
		18									
		19.5									
		21									
22											
GOC	2	7.5	6 or 9 or 12	5/1.8 or 10/3.7	16/0.5 or 24/0.75	30/1.5/1/11.8 or 20/1.5/1/16	980	3500 ~ 4050	4000 ~ 4550	250	22 30
		9									
		12									
		15									
		17.5									
		20.5									
GOC	2.8	7.5	6 or 9 or 12	4.5/2.5 or 9/5.5	16/0.5 or 24/0.75	25/0.75/1/11.8 or 16/0.75/1/16	1115	3500~ 5000	4000~ 5500	200	22 30
		9									
		12									
		15									
GOC	5	9	6 or 9 or 12	4.2/4.2 or 5.6/5.6	16/0.5 or 24/0.75	30/1.5/1/11.8 or 20/1.5/1/16	1325	3500 ~ 4050	4000 ~ 4550	250	22 30
		12									
		14.5									
GOC	10	9	6 or 9 or 12	3/6 or 4.5/9	16/0.5 or 24/0.75	30/1.5/1/11.8 or 20/1.5/1/16	1520	4000 ~ 5000	4600 ~ 5600	315	30 37
		12									
		15									